

Counselors

Dosely Antongiorgi, LPC-S
STCH Ministries
361-991-8680
stchm.org



Gene Benedict, LPC-S
Gene Benedict Counseling
210-316-5618
genebenedict.com



Dave Galbraith, Pastoral Counselor
BreakThrough Moments
210-601-5211
breakthroughmoments.org



Megan Patrick, LPC-S, LMFT
Counseling 4 Life
210-291-8089
Counseling4lifellc.com



Stephanie A. Richards, LPC-S, RPT
Counseling 4 Life
210-606-1934
Counseling4lifellc.com



Counseling4Life, LPCs LMFTs, LPC-Interns
210-209-0642
Counseling4lifellc.com



Dale Schroeder, LPC, LMFT, LCDC, DAPA, CART, CPCE
Schroeder Family Counseling
210-834-2200
daleschroederlpc.com



Chad Warner, LMFT, LCDC
Creek View Counseling
210-280-0262
creekviewcounseling.com



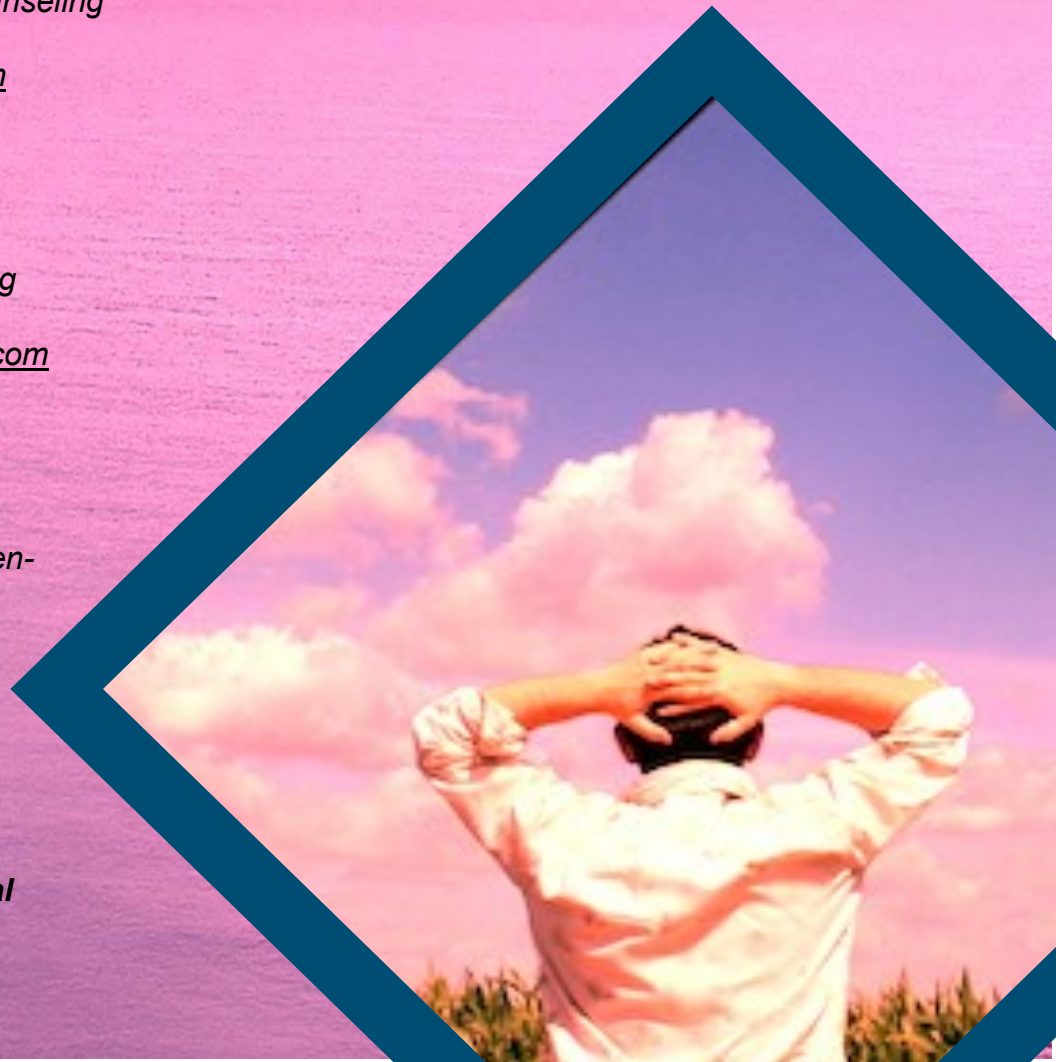
Lauren Settle, LPC-Intern
Boerne Counseling Center
210-415-6444
laurensettle.com



 Marriage & Family
 Addiction
 Individual
 Children

Psychiatrist

Dr. Andrew Martin
Texas Family Psychiatry
210-877-0700
texasfamilypsychiatry.com



Ministry Supports

Life Groups:

gracepoint.org/lifegroups
Contact Moe Lane for Link Info
maureen.lane@gracepoint.org

Identity Groups:

gracepoint.org/idg
Contact Donna Loukas for more info
donna.loukas@gracepoint.org

Other:

Homework/Next Steps:



Counseling
Referrals &
Ministry
Supports